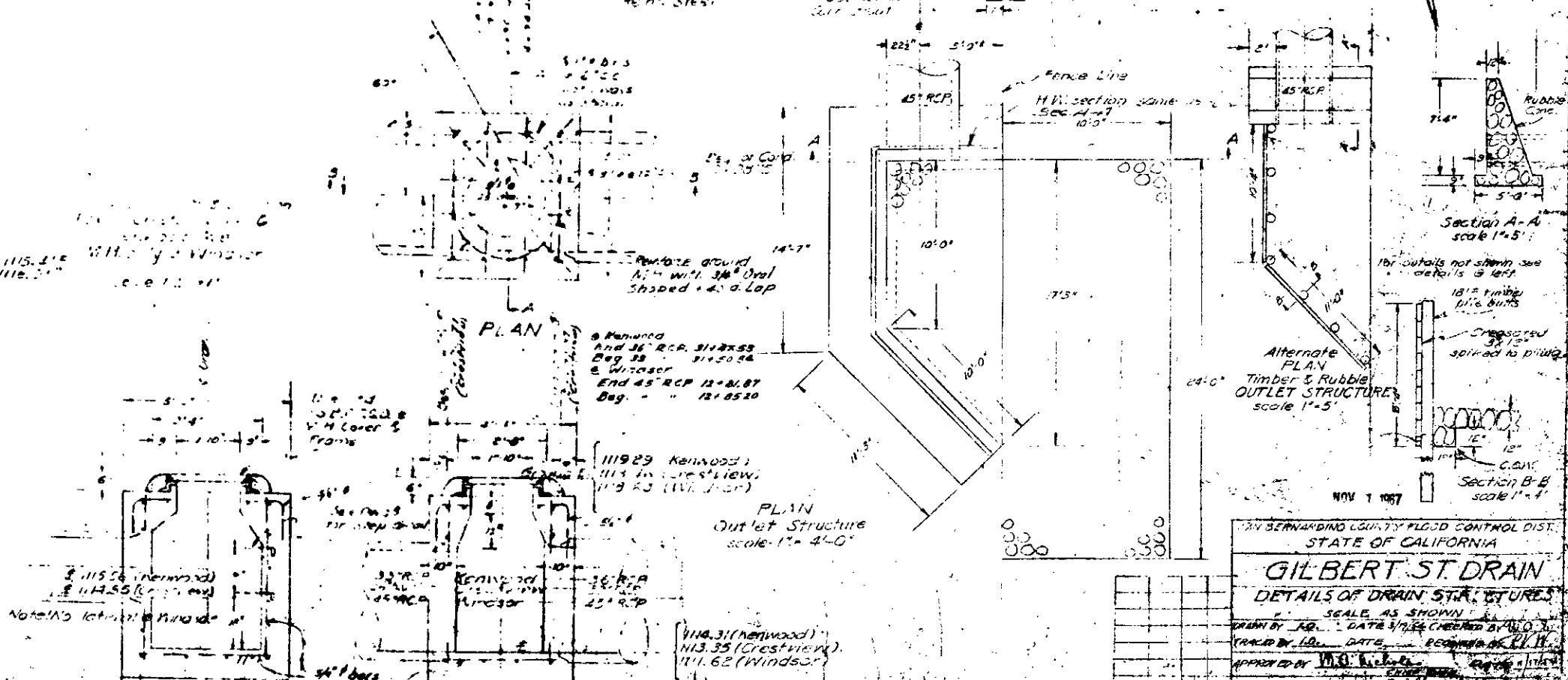
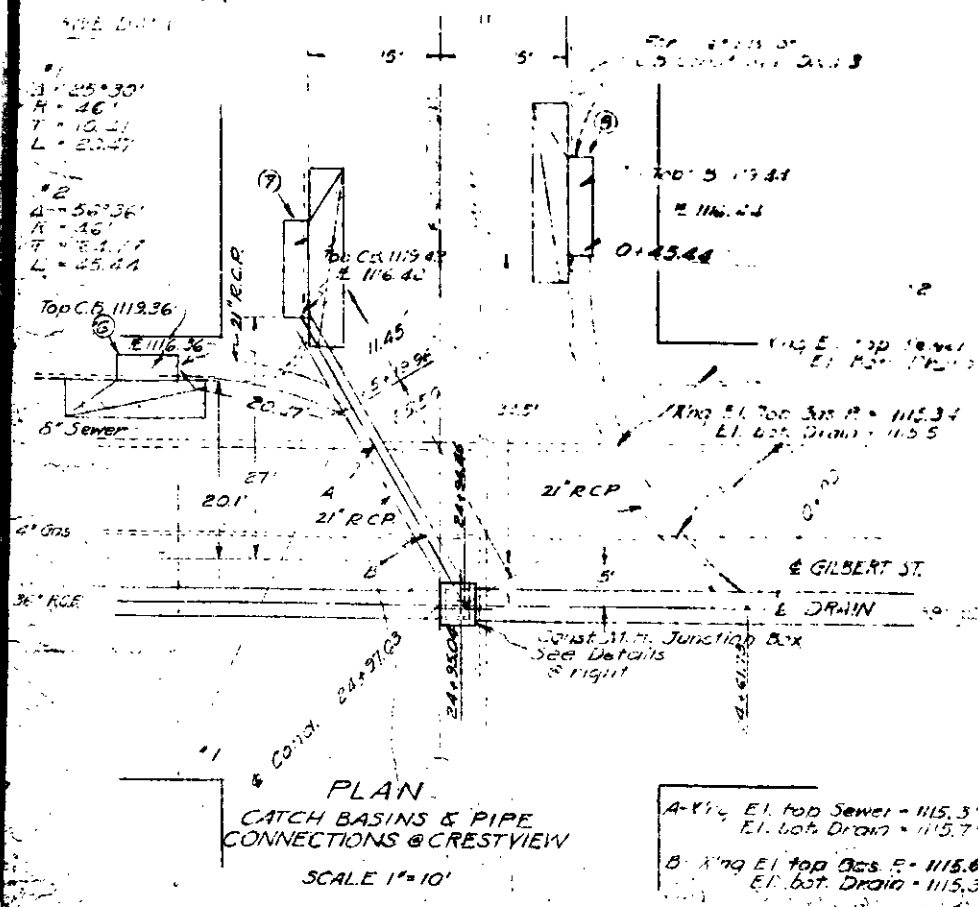
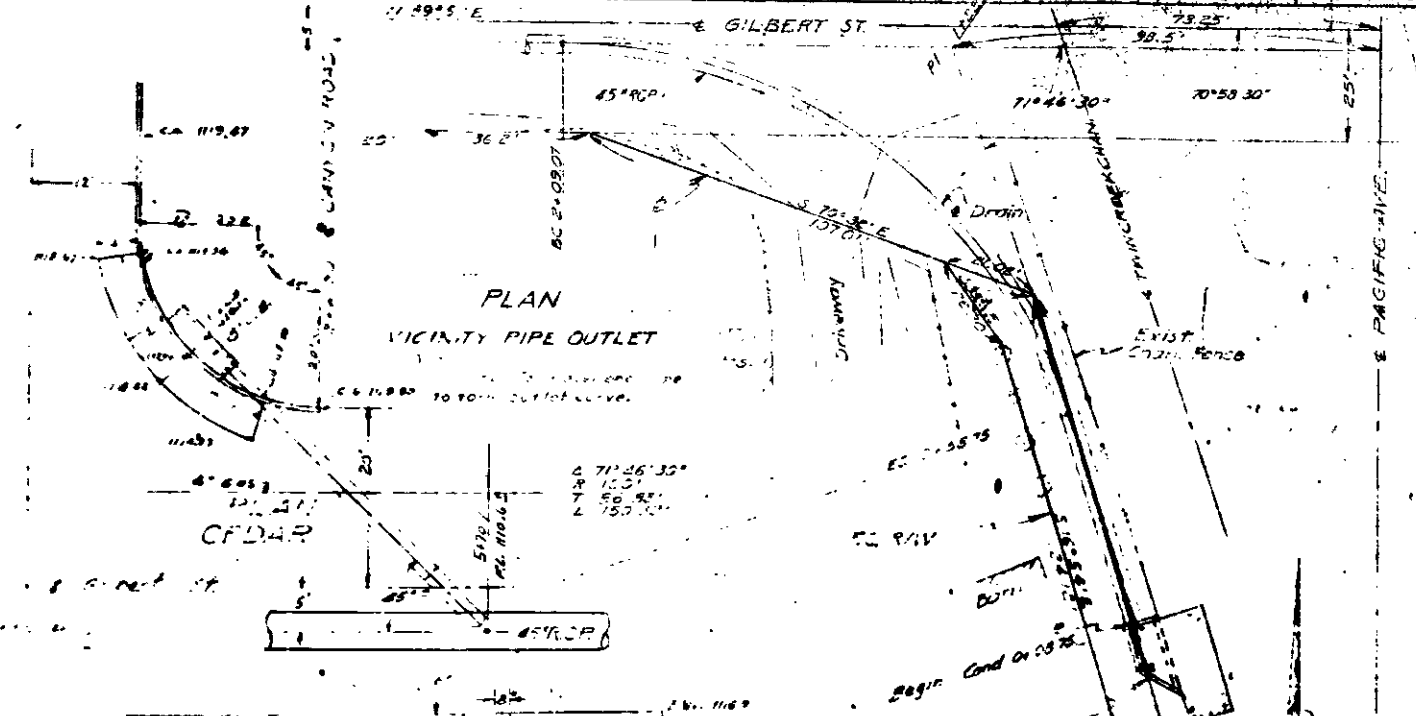


Minimum length of 20' & pieces to be 10' or less, as per ENR 10 (Ch) Catch Basins 9, 10, 11 & 12 and Letdowns not a part of this Project. Installation by others.



NOV 1 1967

SAN BERNARDINO COUNTY FLOOD CONTROL DIST.

STATE OF CALIFORNIA

GILBERT ST DRAIN

DETAILS OF DRAIN STRUCTURES

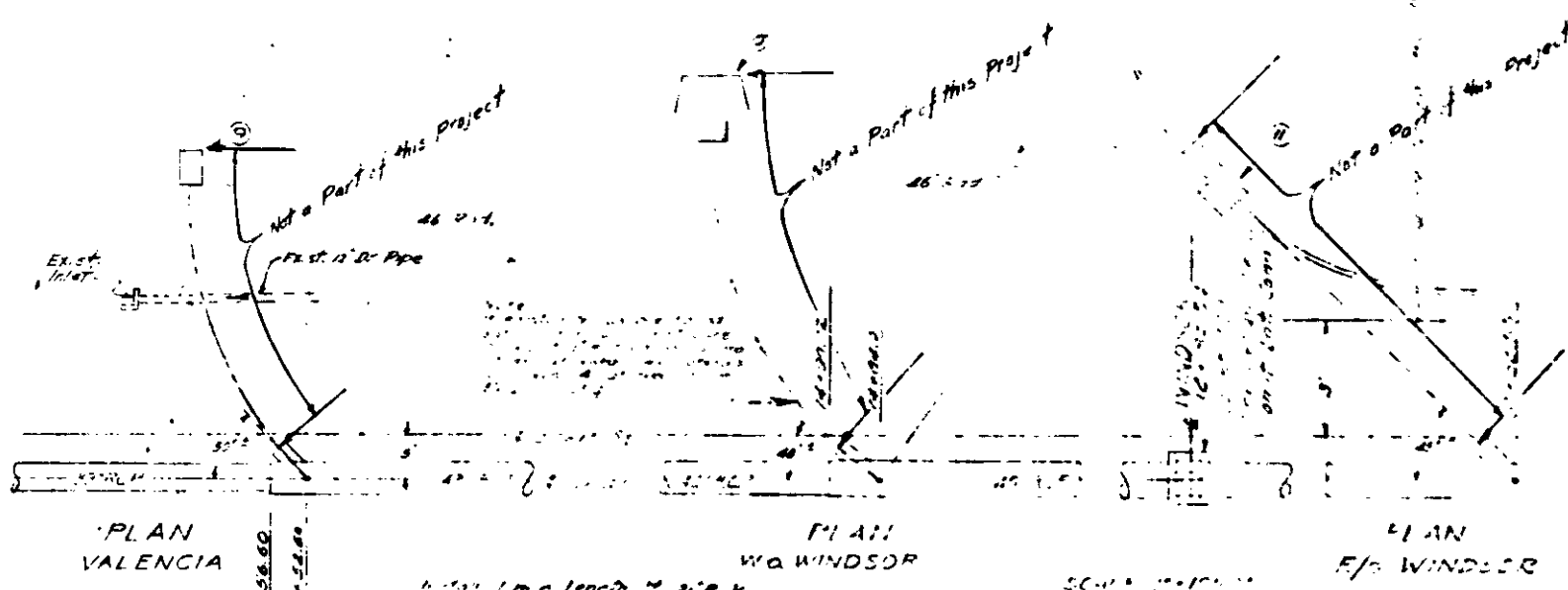
SCALE AS SHOWN

DRAWN BY: J.R. DATE: 7/1/67 CHECKED BY: J.D. DATE: 7/1/67

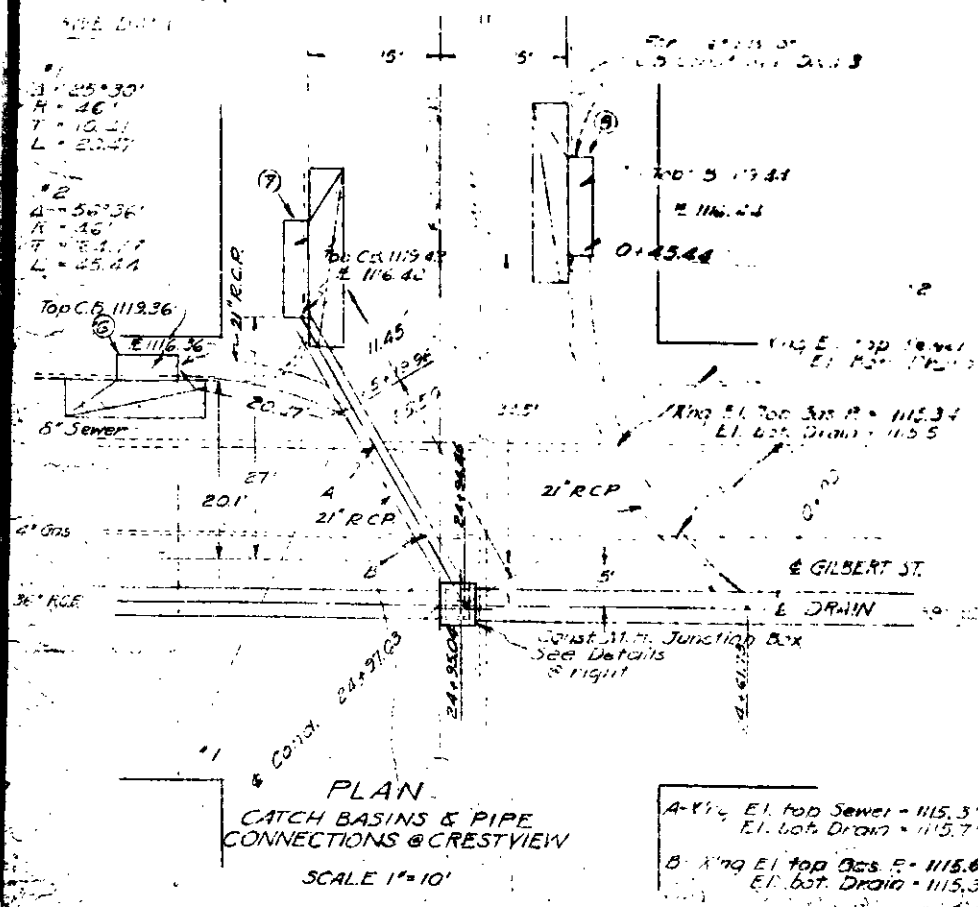
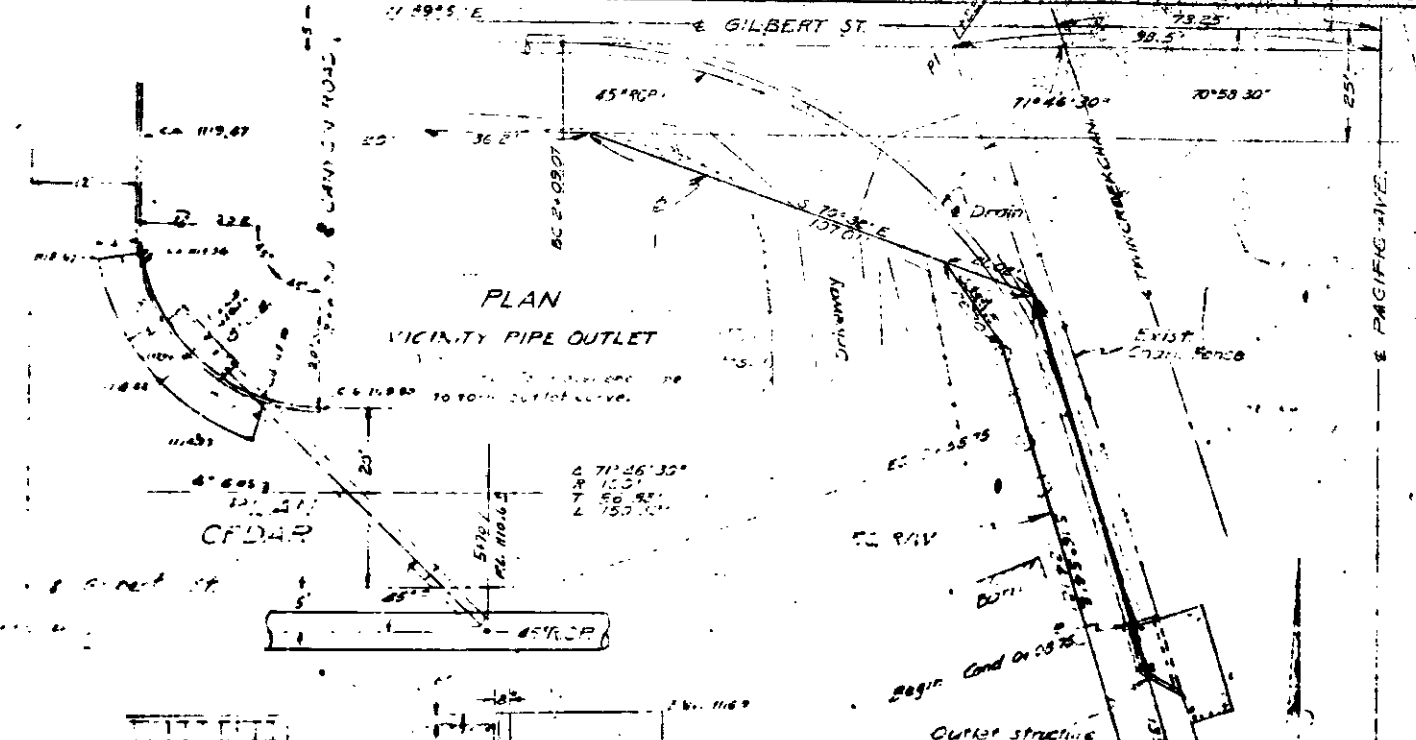
TRACED BY: J.D. DATE: 7/1/67 RECORDED BY: J.D. DATE: 7/1/67

APPROVED BY: [Signature]

APPROVED BY: [Signature]

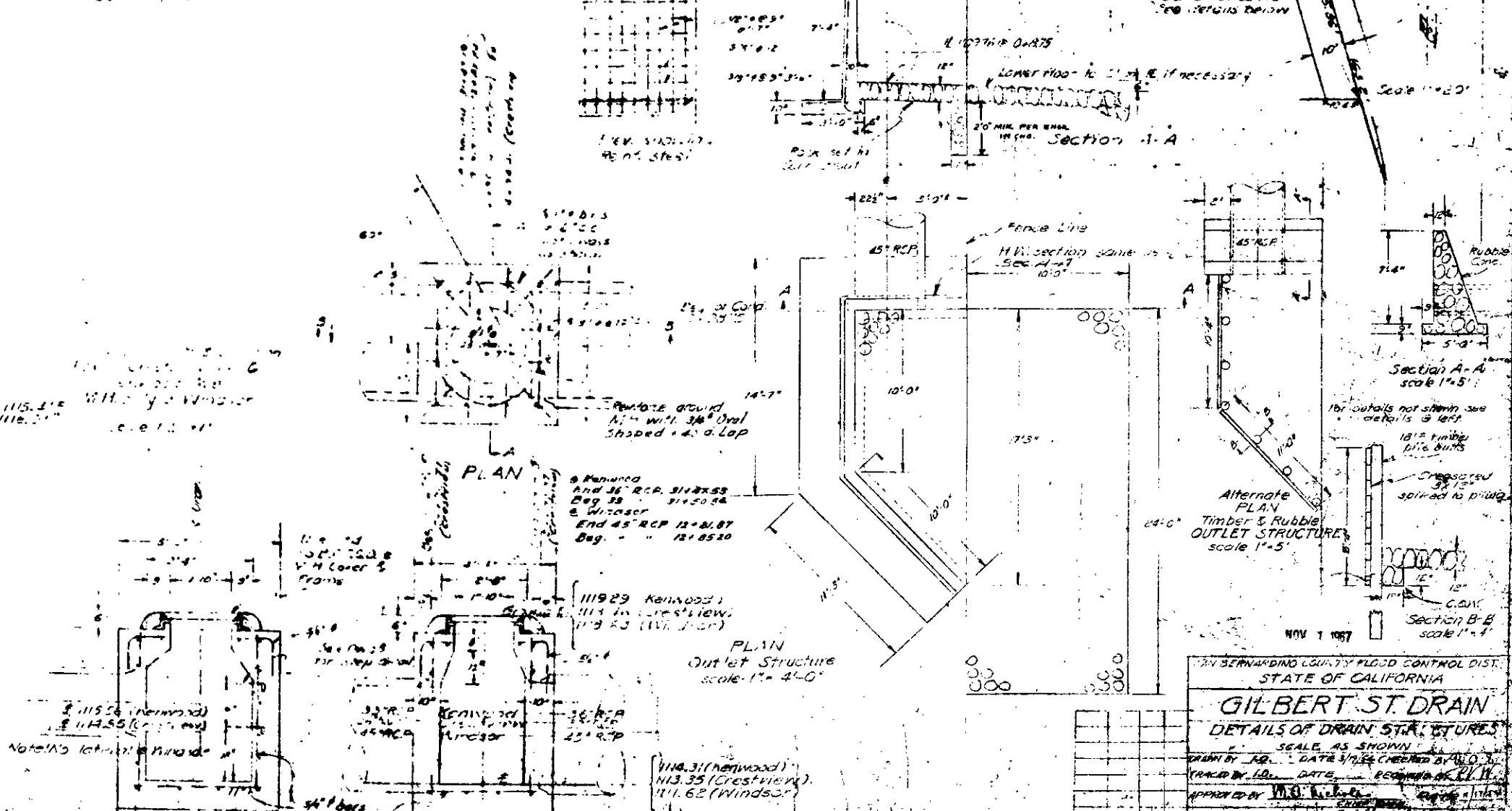


Minimum length of 2' RCP
 pipes to be used in C.B. & C.B.
 1112, as per notes in City
 Catch Basins 9, 10, 11, 12 and Returns
 not a part of this Project.
 Installation by others



A-1' El. Top Sewer = 115.31
 El. bot. Drain = 115.71

B-1' El. Top Bas = 115.62
 El. bot. Drain = 115.31



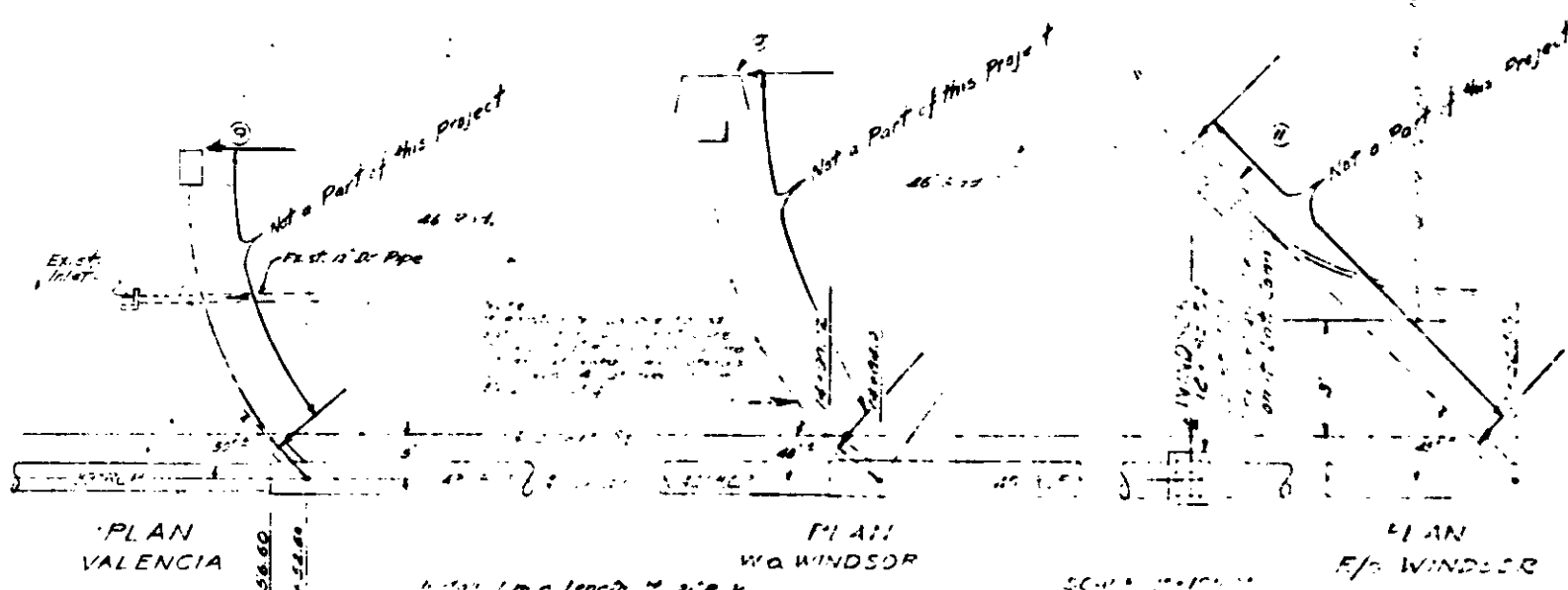
NOV 1 1967

SAN BERNARDINO COUNTY FLOOD CONTROL DIST.
 STATE OF CALIFORNIA

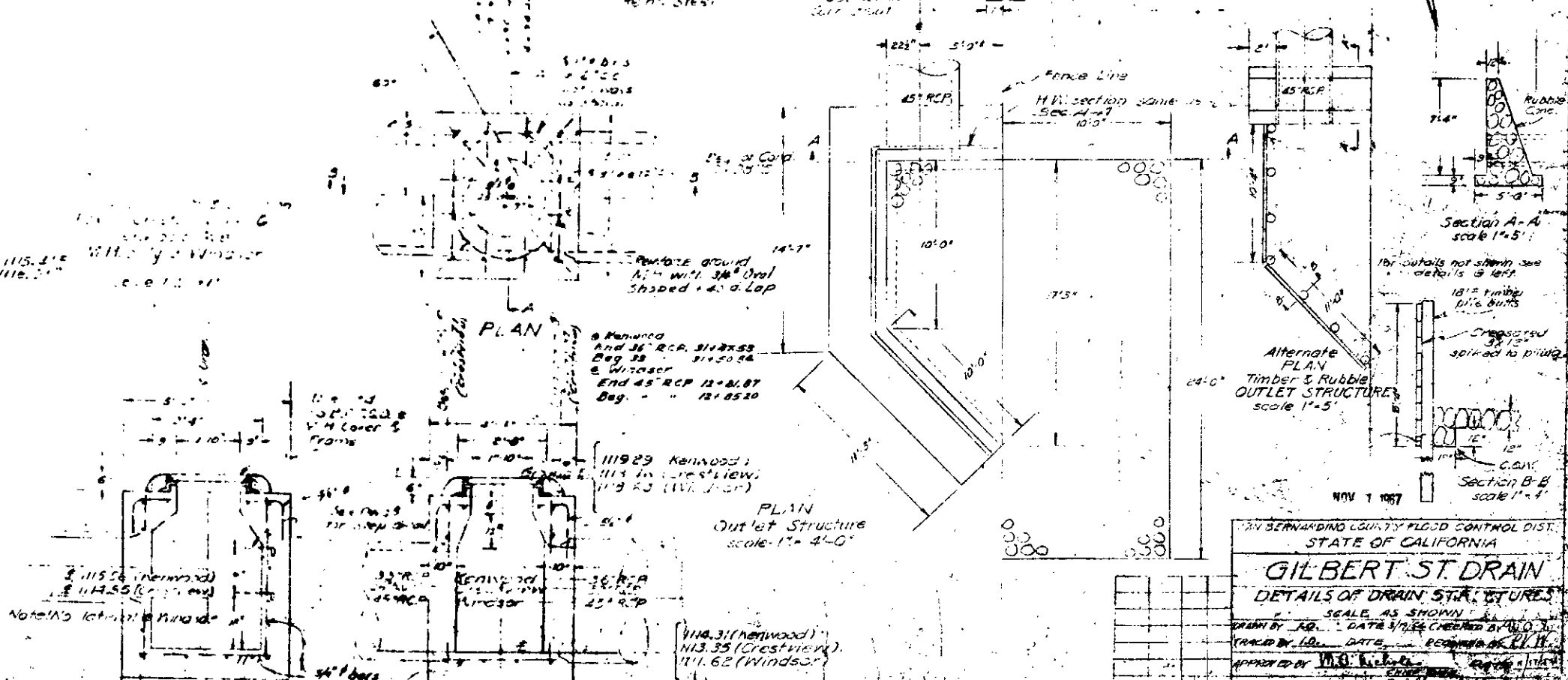
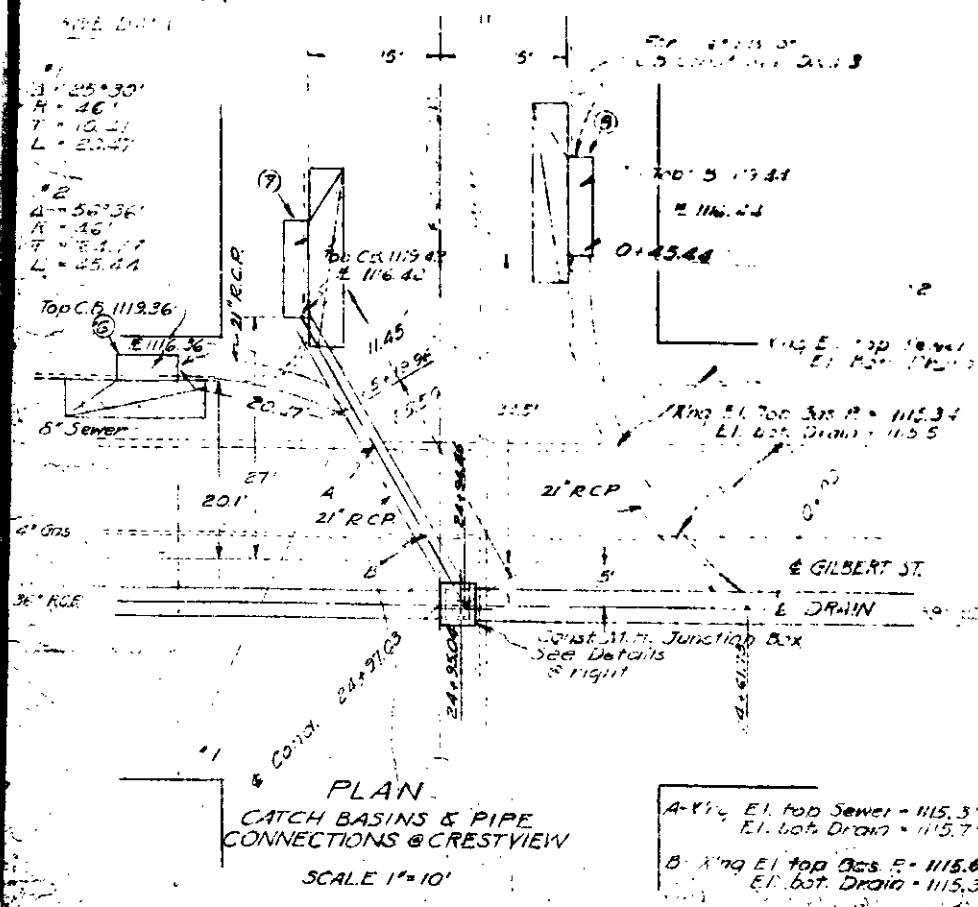
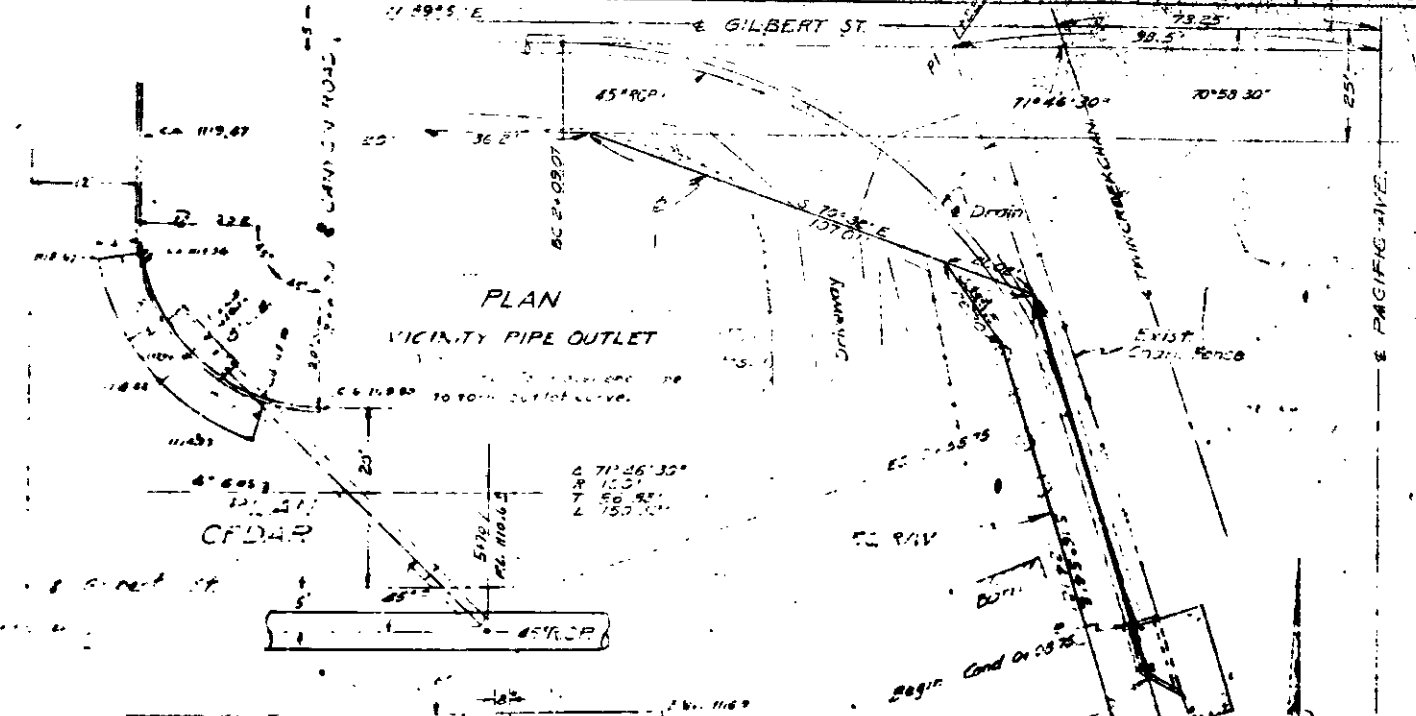
GILBERT ST DRAIN
 DETAILS OF DRAIN STRUCTURES

SCALE AS SHOWN
 DRAWN BY: J.R. DATE: 1/11/67 CHECKED BY: J.D.
 TRACED BY: J.D. DATE: 1/11/67 REVISIONS: 1/11/67

APPROVED BY: [Signature] ENGINEER



Minimum length of 20' & pieces to be 10' or less, as per ENR 10 (Ch) Catch Basins 9, 10, 11 & 12 and Letdowns not a part of this Project. Installation by others.



NOV 1 1987

SAN BERNARDINO COUNTY FLOOD CONTROL DIST.

STATE OF CALIFORNIA

GILBERT ST DRAIN

DETAILS OF DRAIN STRUCTURES

SCALE AS SHOWN

DATE 1/11/87 CHECKED BY [Signature]

APPROVED BY [Signature]